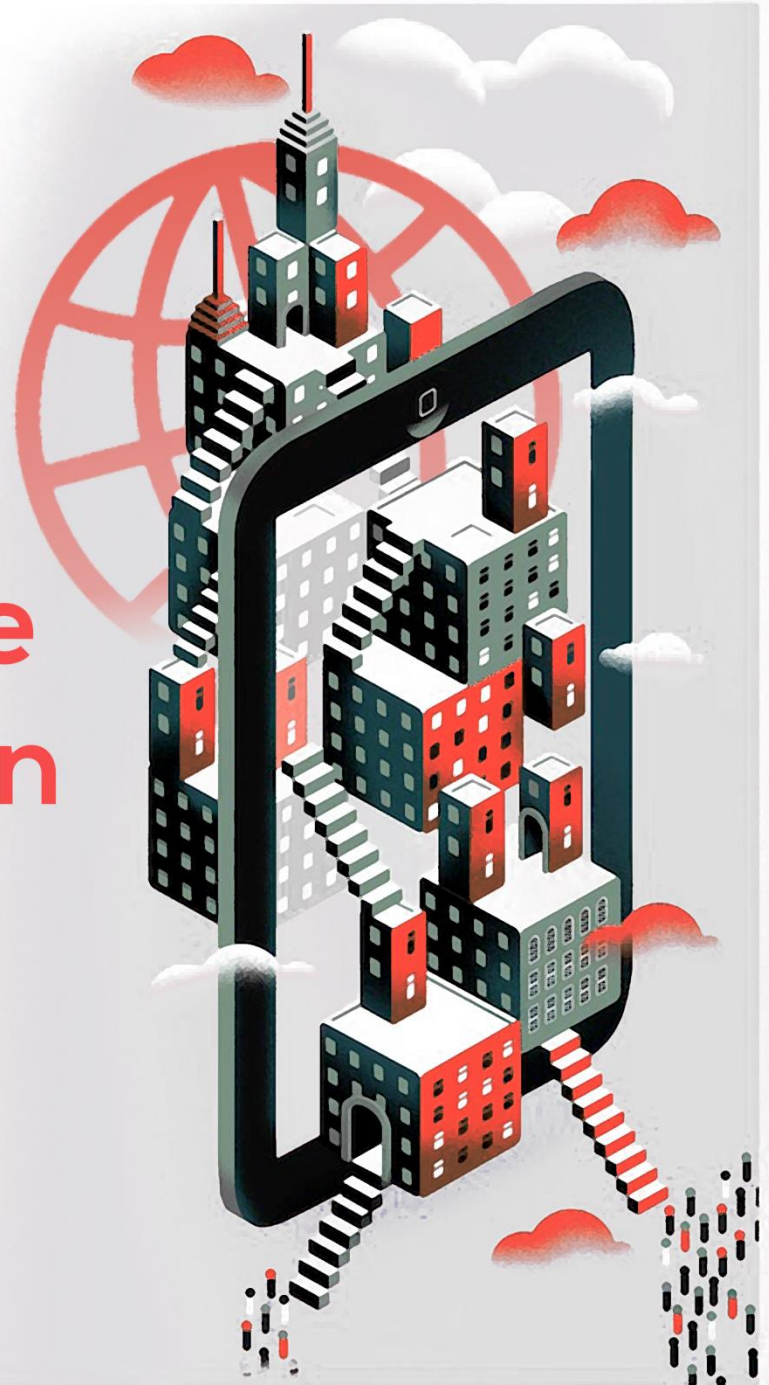




EastWest
INSTITUTE

Global Cyberspace Cooperation Summit VI New York 2015

September 9 – 10, 2015



Practical Information

The EastWest Institute is proudly hosting the 2015 Global Cyberspace Cooperation Summit in New York City.

EWI's Global Cooperation in Cyberspace Initiative is convening policymakers, business leaders, technical experts and civil society with the objective to reduce conflict, crime and other disruptions in cyberspace and promote stability, innovation and inclusion.

This invitation-only meeting of international actors aims to coordinate and consolidate the initiative's progress, showcase results and promote collective action. The annual cyber summits provide a crucial forum for building international, private-public action to foster international cooperation in cyberspace. Breakthrough groups, aligned with the initiative's objectives of economic and political development, digital security and stability, and sound governance and management, carry the program forward.

Global Cyberspace Cooperation Summit VI New York 2015

September 9-10, 2015

The Westin New York at Times Square
270 West 43rd Street



Schedule

Wednesday, September 9, 2015

09:00-17:30

Summit sessions will take place at:

The Westin New York at Times Square
270 West 43rd Street
New York, NY 10036

17:30-18:30

Reception will take place at:

The Westin New York at Times Square
270 West 43rd Street
New York, NY 10036

Thursday, September 10, 2015

09:00-18:00

Summit sessions will take place at:

The Westin New York at Times Square
270 West 43rd Street
New York, NY 10036

Conference Registration

Wednesday, September 9, 2015

Conference opening times are from 09:00 to 17:30. Onsite registration will open at 08:00.

Thursday, September 10, 2015

Conference opening times are from 09:00 to 18:00. Onsite registration will open at 08:30.

When you arrive on site simply go to the registration desk to collect your badge and conference folder. You will need this badge in order to gain entry into the summit venue.

Agenda

You can find the latest draft of the summit agenda at issuu.com/ewipublications/docs/agenda.

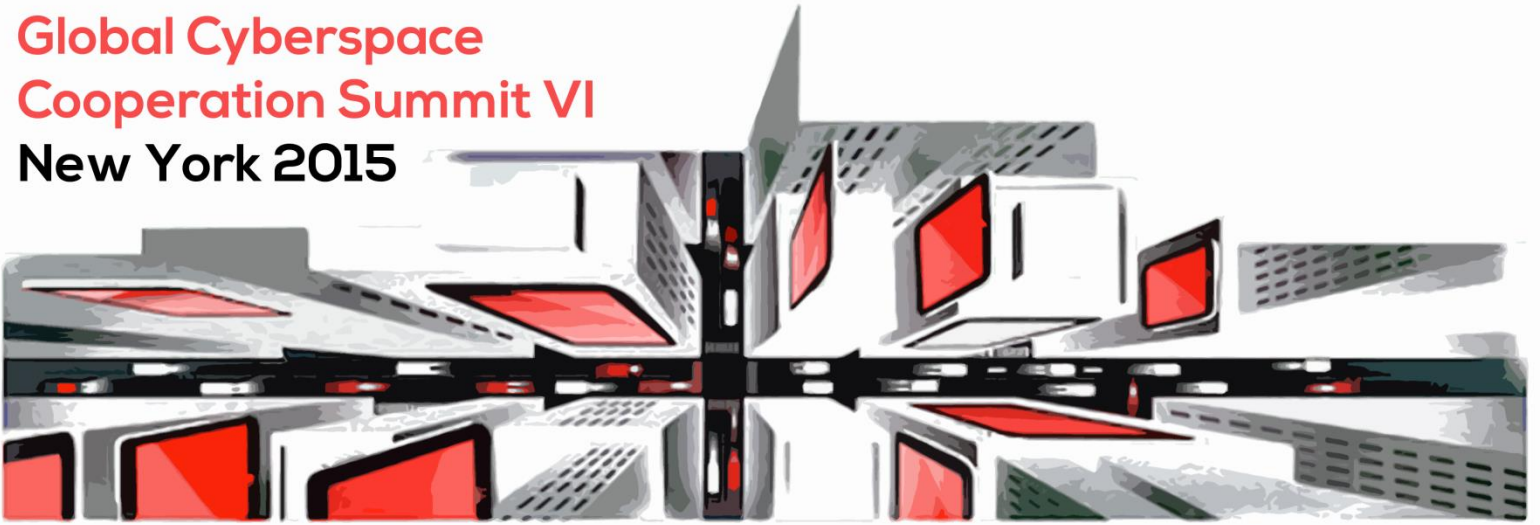
Conference Language

The summit will be conducted in English.

Visa

Please check [here](#) to see if your country participates in the U.S. Visa Waiver Program. Should you need a visa, please contact Jeffrey Michels at jmichels@ewi.info or at +1 (212) 824 4105. Please allow ample time to send for and receive your visa, as processing times vary.

Global Cyberspace Cooperation Summit VI New York 2015



Parking

Please find below a list of parking options nearest The Westin New York at Times Square, located at 270 West 43rd Street, New York, NY 10036.

[Edison Park Fast](#)

307-313 West 44th Street
New York, NY 10036
Tel: +1 (212) 664-9126
24-hour rate: \$45

[Impark](#)

314 West 43rd Street
New York, NY 10036
Tel: +1 (212) 975-0254
24-hour rate: \$52

[GGMC](#)

350 West 43rd Street
New York, NY 10036
Tel: +1 (212) 315-1646
24-hour rate: \$40

Please find a map of all parking garages near the venue [here](#).

Accommodation Options

Please find below a list of hotels near The Westin New York at Times Square, located at 270 West 43rd Street, New York, NY 10036. Please be advised that we do not have a group rate at any of the accommodations listed below, and therefore reservations should be made individually. Also note that this is not an exhaustive list of hotels in New York City.

[The Westin New York at Times Square](#)

270 West 43rd Street
New York, NY 10036
Tel: +1 (212) 201-2700 / +1 (888) 201-0271
Fax: +1 (212) 201-2701

[Marriott Marquis](#)

1535 Broadway
New York, NY 10036
Tel: +1 (650) 398-1900
Fax: +1 (650) 704-8930
Note: 5 minute walking distance from The Westin

[Four Points by Sheraton Midtown/Times Square](#)

326 West 40th Street
New York, NY 10018
Tel: +1 (212) 967-8585 / +1 (866) 716-8133
Note: 5 minute walking distance from The Westin

[InterContinental Times Square](#)

300 West 44th Street
New York, NY 10036
Tel: +1 (212) 803-4500 / +1 (877) 331-5888
Fax: +1 (650) 803-4501
Note: 2 minute walking distance from The Westin

[Grand Hyatt New York](#)

109 East 42nd Street
New York, NY 10017
Tel: +1 (212) 883-1234
Fax: +1 (212) 697-3772
Note: 17 minute walking distance from The Westin

[Hilton Times Square](#)

234 West 42nd Street
New York, NY 10036
Tel: +1 (212) 840-8222
Fax: +1 (212) 840-5516
Note: 3 minute walking distance from The Westin

[Courtyard New York
Manhattan/Times Square](#)

114 West 40th Street
New York, NY 10018
Tel: +1 (212) 391-0088
Fax: +1 (650) 391-6023
Note: 8 minute walking distance
from The Westin

[Comfort Inn Times Square South](#)

305 West 39th Street
New York, NY 10018
Tel: +1 (212) 268-3040
Fax: +1 (212) 268-3437
Email: gm@comfortnyc.com
Note: 5 minute walking distance
from The Westin

[The Plaza Hotel](#)

768 5th Avenue
New York, NY 10019
Tel: +1 (212) 759-3000 / +1 (866)
940-9361
Fax: +1 (212) 759-3001
Email:
plazareservation@fairmont.com
Note: 25 minute walking distance
from The Westin

[Mandarin Oriental New York](#)

80 Columbus Circle West 60th
Street
New York, NY 10023
Tel: +1 (212) 805-8800 / +1 (866)
801-8880
Fax: +1 (212) 805-8888
Email: [monyc-
reservations@mohg.com](mailto:monyc-reservations@mohg.com)
Note: 19 minute walking distance
from The Westin

Transportation

Transportation from John F. Kennedy Airport (JFK) to Manhattan

By Taxi

Taxi stands are located outside of every terminal. Trips to Manhattan are a flat-rate of \$52 (plus tolls and tip) and take approximately 45 to 60 minutes. More information can be found [here](#).

By Car

The AirTrain travels from all terminals to rental car pick-up locations at the Federal Circle Station. An AirTrain map can be found [here](#), and more information, including contact information for available rental car companies, can be found [here](#).

By Public Transportation

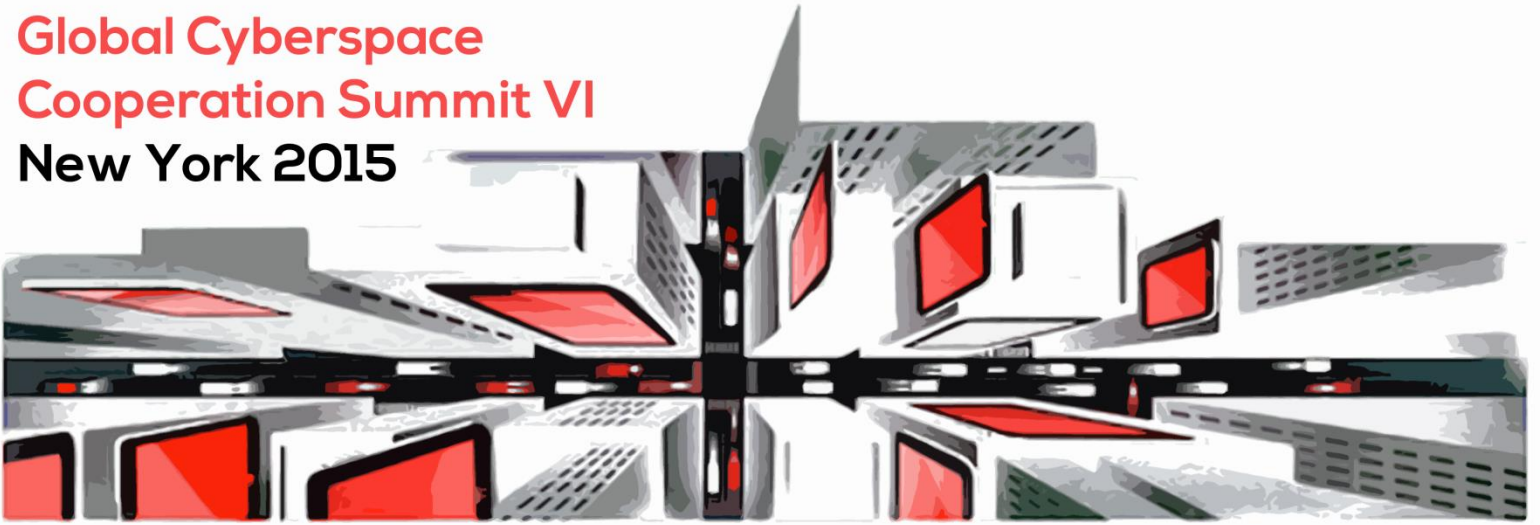
The subway is accessible via the AirTrain traveling from terminals 1, 2, 4, 5, 7 and 8 to two stops outside the airport: Jamaica Station (from which the E line heads into midtown Manhattan, an approximately 60 minute trip) and Howard Beach (from which the A line heads into downtown Manhattan, an approximately 90 minute trip). In addition, the NYC Airporter shuttle service offers trips to Grand Central Station, Penn Station and Port Authority Bus Terminal for \$16 (an approximately 120 minute trip). A New York City subway map can be found [here](#), and more information can be found [here](#).

Transportation from LaGuardia Airport (LGA) to Manhattan

By Taxi

Taxi stands are located outside of every terminal. Trips to Manhattan typically range from \$30 to \$45 (plus tolls and tip) and take approximately 30 to 45 minutes. More information can be found [here](#).

Global Cyberspace Cooperation Summit VI New York 2015



By Car

Shuttle bus service travels directly from all terminals to rental car pick-up locations. More information, including contact information for available rental car companies, can be found [here](#).

By Public Transportation

The subway is accessible via the M60 bus travelling from every terminal. The M60 connects to the N and Q subway lines at their Hoyt Avenue/31st Street stop (with service into midtown Manhattan, an approximately 25 minute trip). In addition, the NYC Airporter shuttle service offers trips to Grand Central Station, Penn Station, and Port Authority Bus Terminal for \$13 (an approximately 90 minute trip). A New York City subway map can be found [here](#), and more information can be found [here](#).

Transportation from Newark Airport (EWR) to Manhattan

By Taxi

Taxi stands are located outside of every terminal. Trips to Manhattan typically range from \$50 to \$60 (plus tolls and tip) and take approximately 40 to 55 minutes. More information can be found [here](#).

By Car

The AirTrain Newark travels from all terminals to rental car pick-up locations in Stations P2 and P3. An AirTrain Newark map can be found [here](#), and more information, including contact information for available rental car companies, can be found [here](#).

By Public Transportation

The airport express bus travels from terminals A, B and C to the Port Authority station in Manhattan, within walking distance of the summit venue, for \$16 (an approximately 45 minute trip). More information can be found [here](#).

Other Practical Information

Subway Transportation near The Westin

The summit venue is located near the 42nd Street Port Authority subway station (which services the A, C and E lines) and is one block away from the Times Square 42nd Street subway station (which services the 1, 2, 3, 7, N, Q and R lines and the shuttle to Grand Central Station). A map of the New York City subway can be found [here](#).

Taxi and Car Service Information

Taxis are readily accessible in New York City. Official taxis are yellow cabs that can be hailed on the street. Tipping is customary.

Uber is a car service widely used in New York City that is accessible using the Uber mobile app. More information can be found [here](#).

Lyft is a peer-to-peer ride sharing service in which customers can request a ride using the Lyft mobile app. More information can be found [here](#).

Dial 7 is a New York car service which allows customers to book a trip in advance, either online at dial7.com or over the phone at +1 (212) 777-7777. More information can be found [here](#).

Attire

Business attire is recommended for all events during the summit.

Smoking

Smoking is prohibited in all public areas of The Westin New York at Times Square.

Weather

New York climate in September is warm and typically humid with an average high temperature of 78 degrees Fahrenheit/25 degrees Celsius and an average low temperature of 63 degrees Fahrenheit/17 degrees Celsius.

Time Difference

New York City is four hours behind UTC/GMT in September.

Tourism Information

From sites like the Statue of Liberty and Central Park to museums, shows and shopping options, there is no shortage of ways to enjoy your time in New York City. For detailed tourist information on attractions, restaurants, events and more, please visit <http://www.nycgo.com/>.

—

For the most up to date information on the summit,
please visit www.cybersummit.info

EastWest Institute

Global Cooperation in Cyberspace Initiative

SUPPORTERS

Microsoft

Huawei Technologies

Palo Alto Networks

NXP Semiconductors

Qihoo 360

Unisys

CenturyLink

The William and Flora Hewlett Foundation

PARTNERS

IEEE Communications Society



New York

Brussels

Moscow

ewi.info

[@EWInstitute](https://twitter.com/EWInstitute)

[#EWlcyber](https://twitter.com/EWInstitute)